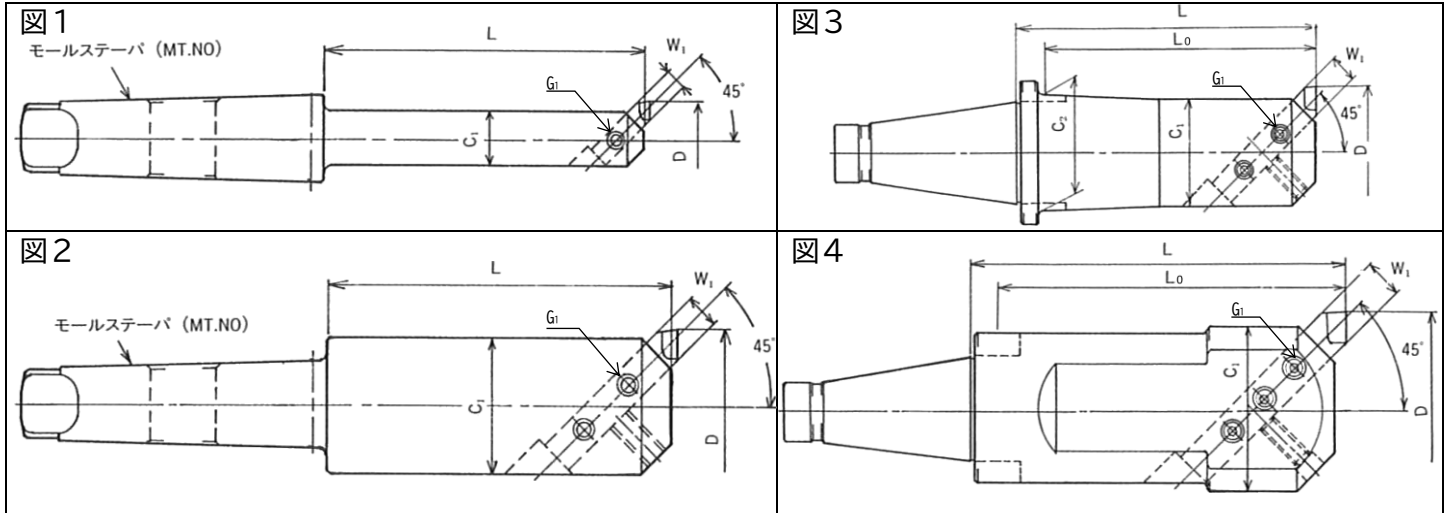


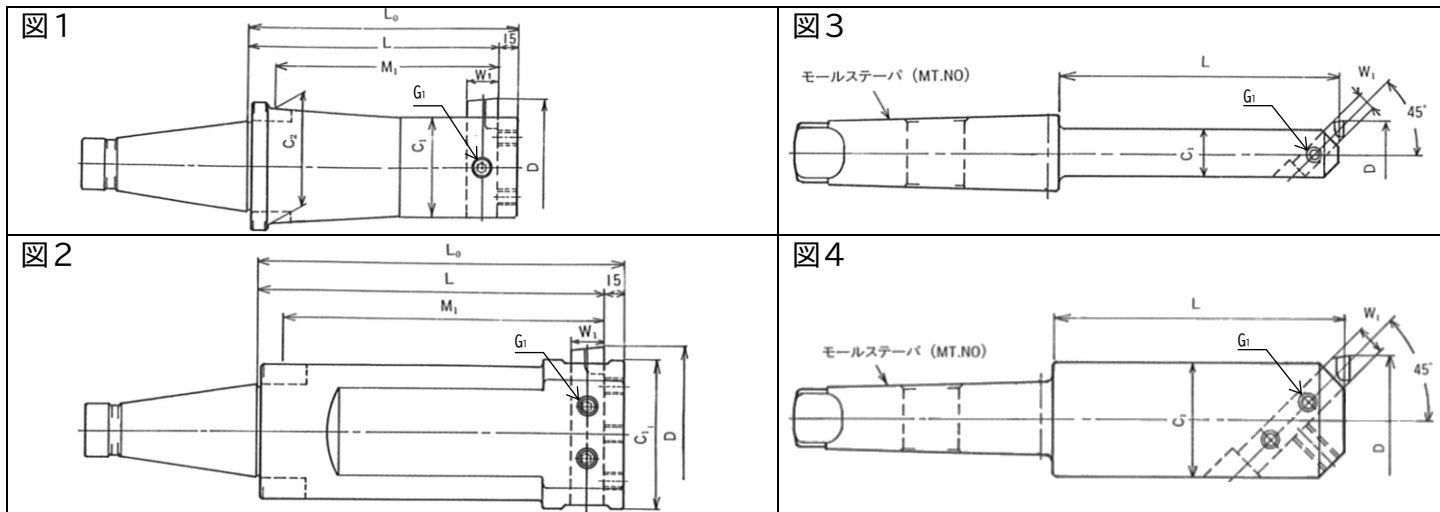
# BSA(角バイト式ボーリングバーA型) BSA BORING BAR(A TYPE SQUARE TOOL)



	D 加工径 (φ)		コード	図	L	C <sub>1</sub>	C <sub>2</sub>	L <sub>0</sub>	□W <sub>1</sub>	G <sub>1</sub>
	最小	最大								
MT	38	52	MT5 -BSA 38-163	1	163	30	-	-	10	M8
	50	65	-BSA 50-200		200	40	-	-	13	M10
	62	90	-BSA 62-228		228	50	-	-	16	
	72	110	-BSA 72-225		225	60	-	-	19	
	90	125	-BSA 90-213		213	75	-	-	19	M12
	38	52	MT6 -BSA 38-163	2	163	30	-	-	10	M8
	50	65	-BSA 50-200		200	40	-	-	13	M10
	62	90	-BSA 62-238		238	50	-	-	16	
	72	110	-BSA 72-275		275	60	-	-	19	
	90	125	-BSA 90-268		268	75	-	-	19	M12
105	160	-BSA105-256	256	90	-	-	-	25		
NT	25	38	NT40M -BSA 25-120	3	120	20	22	105	8	M6
	30	42	-BSA 30-150		150	24	26	135	8	
	38	52	-BSA 38-165		165	30	33	150	10	M8
	50	65	-BSA 50-165		165	40	44	150	13	
			-210		210	40	44	195	13	
	62	90	-BSA 62-165		165	50	56	150	16	M10
			-225		225	50	56	210	16	
	72	110	-BSA 72-165		165	60	-	150	19	
			-225		225	60	-	210	19	
	90	125	-BSA 90-165		165	75	-	150	19	M12
			-210	210	75	-	195	19		
	25	38	NT50M -BSA 25-120	4	120	20	22	100	8	M6
	30	42	-BSA 30-150		150	24	26	130	8	
	38	52	-BSA 38-165		165	30	33	145	10	M8
	42	56	-BSA 42-195		195	34	37	175	10	
	50	65	-BSA 50-165		165	40	44	145	13	M10
			-225		225	40	44	205	13	
	62	90	-BSA 62-180		180	50	56	160	16	
			-255		255	50	56	235	16	
	72	110	-BSA 72-195		195	60	66	175	19	M12
		-285	285		60	66	265	19		
90	125	-BSA 90-210	210	75	80	190	19	M12		
		-300	300	75	80	280	19			
105	160	-BSA105-195	195	90	-	-	25		M12	
		-285	285	90	-	-	25			
130	190	-BSA130-255	255	110	-	-	25			

※受注製作品 在庫、納期はお問い合わせください。

# BSB(角バイト式ボーリングバーB型) BSB BORING BAR(B TYPE SQUARE TOOL)



	D 加工径 (φ)		コード	図	L	C <sub>1</sub>	C <sub>2</sub>	M <sub>1</sub>	□W <sub>1</sub>	G <sub>1</sub>	
	最小	最大									
MT	38	70	MT5 -BSB 38-140	1	140	30	-	-	10	M10	
	50	90	-BSB 50-175		175	40	-	-	13		
	62	115	-BSB 62-205	2	205	50	-	-	16		
	72	135	-BSB 72-200		200	60	-	-	19		
	90	150	-BSB 90-185	185	75	-	-	19			
	38	70	MT6 -BSB 38-140	1	140	30	-		-	10	M10
	50	90	-BSB 50-175		175	40	-	-	13		
	62	115	-BSB 62-215	215	50	-	-	16			
	72	135	-BSB 72-250	2	250	60	-	-	19	M12	
	90	150	-BSB 90-240		240	75	-	-			
105	190	-BSB105-225	225	90	-	-	25				
NT	25	52	NT40M-BSB 25-120	3	120	20	22	105	8	M8	
	38	70	-BSB 38-165		165	30	33	150	10		
	50	90	-BSB 50-165		165	40	44	150	13		
			-210		210	-	195				
	62	115	-BSB 62-165		165	50	56	150	16		
			-225		225	-	210				
	72	135	-BSB 72-165		165	60	-	150	19		
			-225		225	-	210				
	90	150	-BSB 90-165		4	165	75	-	-	19	M12
	-210	210	-			-					
	25	52	NT50M-BSB 25-120	3	120	20	22	100	8	M8	
	38	70	-BSB 38-165		165	30	33	145	10		
	50	90	-BSB 50-165		165	40	44	145	13		
			-225		225	-	205				
	62	115	-BSB 62-180		180	50	56	160	16		
			-255		255	-	235				
	72	135	-BSB 72-195		195	60	66	175	19		
			-285		285	-	265				
	90	150	-BSB 90-210		210	75	80	190	19		
			-300		300	-	280				
105	190	-BSB105-195	195	90	-	-	25				
		-285	285	94	-						
130	260	-BSB130-255	4	255	110	-	-	25			

※受注製作品 在庫、納期はお問い合わせください。