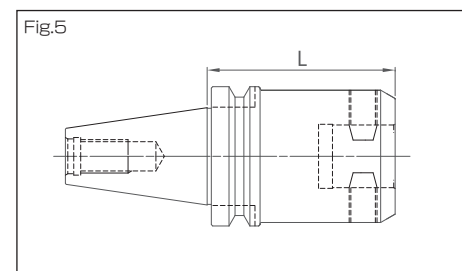
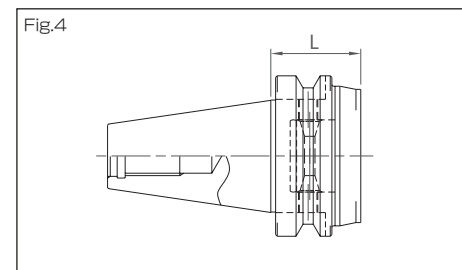
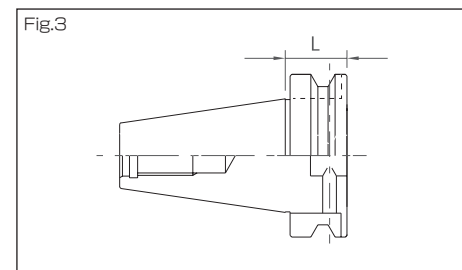
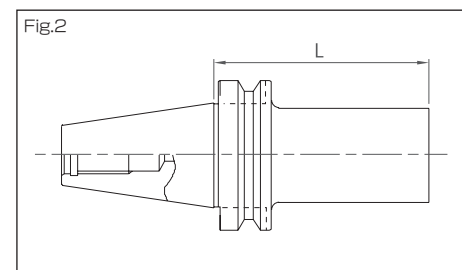
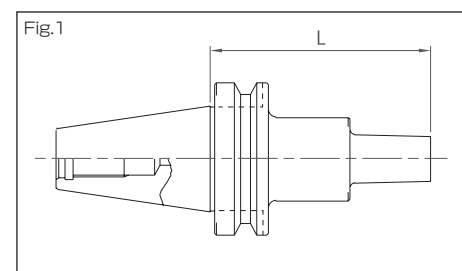


# シャンク Shank

## シャンク互換表 Compatibility table

### BTシャンク互換表 BT Shank Compatibility Table



(単位: mm)

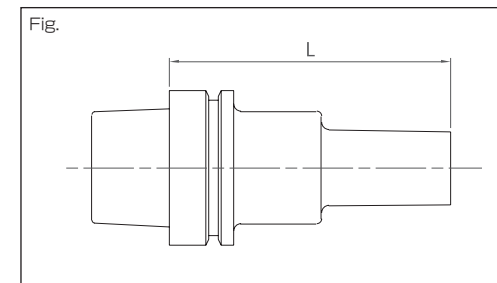
シャンクコード Shank Code	BT No.	L	適用本体 Applicable unit	図 Fig.	重量 (kg) Weight		
BT30-SH 18 - 50	BT30	50	ABH-SB18,ABH-18	1	0.5		
-SH 23 - 55		55	ABH-SB23,ABH-23,BCH-28,BCH-33		0.6		
-SH 30 - 45		45	ABH-SB30,ABH-30,BCH-41		0.5		
-SH 40 - 35		35	ABH-SB40,ABH-40,BCH-52		0.5		
-SH 45 - 22		22	PRM45		0.3		
BT40-SH 18 - 85	BT40	85	ABH-SB18,ABH-18	1	1.1		
-SH 23 - 70		70	ABH-SB23,ABH-23,BCH-28,BCH-33		1.1		
-130		130			1.8		
-SH 30 - 85		85	ABH-SB30,ABH-30,BCH-41		1.3		
-115		115			1.6		
-SH 40 - 75		75	ABH-SB40,ABH-40,BCH-52		1.3		
-105		105			1.6		
-SH 45 - 27		27	PRM45		0.7		
-SH 50 - 93		93	ABH-SB50,ABH-50		1.8		
-123		123			2.3		
-SH 57 - 68	BT40	68	BCH-67	2	1.8		
-98		98		2.4			
-SH 60 - 27		27	PRM60	3	0.6		
-SH 63 - 68	BT40	68	ABH-63,BCH-90	2	1.7		
-98		98			2.4		
-SH 63M- 30		30	MAG-T63		0.9		
-SH 83 - 65		65	ABH-83,ABQ,BCH-120		1.9		
-95		95			2.7		
-SH125 - 84		84	BHB-125		2.3		
-SH180 - 65		65	BHB-180,BHB-280		2.6		
BT50-SH 18 -130		BT50	130		ABH-SB18,ABH-18	1	4.4
-SH 23 -100			100		ABH-SB23,ABH-23,BCH-28,BCH-33		3.8
-160			160				4.5
-SH 30 - 85	85		ABH-SB30,ABH-30,BCH-41	3.7			
-145	145			5.4			
-SH 40 -105	105		ABH-SB40,ABH-40,BCH-52	4.0			
-165	165			4.8			
-SH 45 - 40	40		PRM45	3.5			
-SH 50 -123	123		ABH-SB50,ABH-50	4.6			
-183	183			5.7			
-SH 57 - 83	83		BCH-67	5.1			
-143	143			6.6			
-188	188			8.1			
-SH 60 - 40	BT50		40	PRM60	3.5		
-SH 63 - 83			83		4.4		
-143		143	ABH-63,BCH-90	5.7			
-203	203		7.1				
-SH 63M- 40	BT50	40	MAG-T63	2	3.4		
-SH 83 - 95		95	ABH-83,BCH-120,ABQ		5.1		
-140		140			6.5		
-185		185			8.0		
-SH 83Q- 75		75	ABH83*,ABQ*,BCH-120*		5.3		
-135		135			8.6		
-SH 83M- 56		56	MAG-T83		4.4		
-SH160 - 90		90	BCH-160,BCH-220		7.3		
-150		150			9.3		
-SH180 - 80		BT50	80		BHB-125*,BHB-180,BHB-280	2	5.3
-140	140			8.8			
-SH180T- 90	90		BTA	8.0			
-150	150			11.0			
-SH300 - 67	67		M-BCH	5.9			
-SH320 -100	100	BTM	7.5				
BT60-SH300 - 67	BT60	67	M-BCH	2	15.1		
-SH320 - 56		56	BTM*		19.7		

- \*印のついた本体に接続する場合には中継フランジが必要です。
  - オートマチックリセッシングヘッド(RH)用のシャンクをご用命の場合は別途お問い合わせ下さい。
- A relay flange is required to connect to the units marked with an asterisk(\*).
  - Contact us separately if you require shanks for the Automatic Reversing Head (RH).

# Shank シャンク

## Compatibility table シャンク互換表

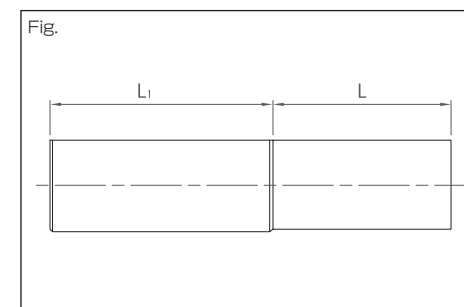
### HSKシャンク互換表 HSK Shank Compatibility Table



(単位: mm)

シャンクコード Shank code	HSK No.	L	適用本体 Applicable Unit	重量 (kg) Weight	
A63-SH18- 85	HSK-A63	85	ABH-SB18,ABH-18	1.0	
-SH23- 70		70	ABH-SB23,ABH-23	0.8	
-130		130	BCH-28,BCH-33	1.6	
-SH30- 85		85	ABH-SB30,ABH-30	1.0	
-115		115	BCH-41	1.3	
-SH40- 75		45	ABH-SB40,ABH-40	1.1	
-105		105	BCH-52	1.3	
-SH45- 45		45	PRM-45	1.3	
-SH50- 68		68	ABH-SB50,ABH-50	1.3	
-98		98		1.8	
-SH57- 63		63	BCH-67	1.1	
-93		93		1.7	
-SH60- 50		50	PRM-60	1.7	
A100-SH18-130		HSK-A100	130	ABH-SB18,ABH-18	3.1
-SH23-100			100	ABH-SB23,ABH-23	2.7
-160	160		BCH-28,BCH-33	3.4	
-SH30- 85	85		ABH-SB30,ABH-30	2.5	
-145	145		BCH-41	3.5	
-SH40-105	105		ABH-SB40,ABH-40	2.7	
-165	165		BCH-52	3.8	
-SH45- 65	65		PRM-45	2.3	
-SH50- 98	98		ABH-SB50,ABH-50	3.0	
-158	158			4.3	
-SH57- 83	83		BCH-67	3.0	
-143	143			3.9	
-203	203			4.8	
-SH60- 65	65		PRM-60	2.9	
-SH63- 83	83			3.2	
-143	143	ABH-63,BCH-90	4.6		
-203	203		6.1		
-SH83- 95	95		3.5		
-140	140	ABH-83,ABQ,BCH-120	5.1		
-185	185		6.7		

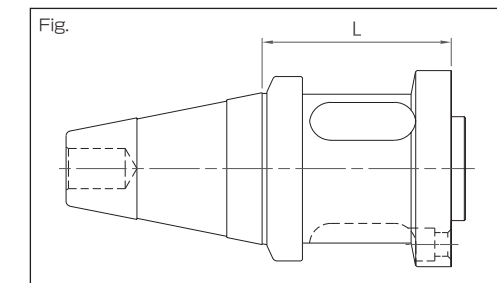
### STシャンク互換表 ST Shank Compatibility Table



(単位: mm)

シャンクコード Shank code	ST No.	L	L1	適用本体 Applicable Unit	重量 (kg) Weight
ST25-SH18-30	ST25	30	55	ABH-SB18,ABH-18	0.3
-SH23-35		35		ABH-SB23,ABH-23,BCH-28,BCH-33	0.3
-SH30-40		40		ABH-SB30,ABH-30,BCH-41	0.4
-SH45-30		30		PRM-45	0.5
ST32-SH18-50	ST32	50	75	ABH-SB18,ABH-18	0.6
-SH23-55		55		ABH-SB23,ABH-23,BCH-28,BCH-33	0.7
-SH30-60		60		ABH-SB30,ABH-30,BCH-41	0.8
-SH40-50		50		ABH-SB40,ABH-40,BCH-52	0.9
-SH45-20		20		PRM-45	0.7
-SH50-53		53		ABH-SB50,ABH-50	0.9
-SH60-30	30	PRM-60	1.1		
ST42-SH18-50	ST42	50	90	ABH-SB18,ABH-18	1.1
-SH23-55		55		ABH-SB23,ABH-23,BCH-28,BCH-33	1.2
-SH30-60		60		ABH-SB30,ABH-30,BCH-41	1.3
-SH40-50		50		ABH-SB40,ABH-40,BCH-52	1.4
-SH50-53		53		ABH-SB50,ABH-50	1.4
-SH60-20		20		PRM-60	1.4
-SH57-53		53		BCH-67	1.8
-SH63-53		53		ABH-63,BCH-90	1.7

### Hシャンク互換表 H Shank Compatibility Table



(単位: mm)

シャンクコード Shank code	H No.	L	適用本体 Applicable Unit	重量 (kg) Weight
H50-SH 18- 40	H50	40	ABH-SB18,ABH-18	1.9
- 80		80		2.0
-SH 23- 65		65	ABH-SB23,ABH-23	2.0
-105		105	BCH-28,BCH-33	2.1
-SH 30- 70		70	ABH-SB30,ABH-30	2.0
-110		110	BCH-41	2.2
-SH 40-100		100	ABH-SB40,ABH-40	2.5
-140		140	BCH-52	2.9
-SH 50- 78		78		2.7
-128		128	ABH-SB50,ABH-50	3.5
-178		178		4.3
-SH 57- 83		83		2.8
-133		133	BCH-67	3.9
-183		183		5.0
-SH 63- 83		83		3.0
-133	133	ABH-63,BCH-90	4.2	
-183	183		5.4	
-SH 83- 80	80		3.2	
-130	130	ABH-83-BCH-120, ABQ	4.4	
-180	180		5.6	
-SH160- 49	49	BCH-160,BCH-220	3.1	
-SH180- 49	49	BHB125* BHB180,BHB-260	3.1	

- \*印のついた本体に接続する場合には中継フランジが必要です。
- A relay flange is required to connect to the units marked with an asterisk(\*).